



GOOD MORNING

Have Good Trading Day

THURSDAY



**Price is what you pay.
Value is what you get.**

- Warren Buffet



MARKET PULSE

INDIAN INDICES

| NAME | CMP | NET CH. | % |
|--------|-------|---------|--------|
| SENSEX | 30658 | +76.17 | +0.025 |
| NIFTY | 9525 | +13.5 | +0.14 |

INDIAN ADR'S

| SYMBOL | CLOSE | GAIN/ LOSS % |
|-----------|-------|--------------|
| DRREDDY | 41.82 | -1.27 |
| HDFCBANK | 84.43 | -1.44 |
| ICICIBK | 9.50 | -1.45 |
| INFY | 14.89 | -2.42 |
| TATAMOTOR | 34.21 | +0.09 |
| WIPRO | 10.25 | -1.82 |

FII AND MF ACTIVITY

| SYMBOL | |
|------------------------|---------|
| FIIs Eq (Provisional) | 858.29 |
| FIIs Index Future | -7.86 |
| FIIs Index Options | 23.96 |
| FIIs Stock Future | -21.02 |
| FIIs Stock Options | -110.62 |
| DII's Eq (Provisional) | -401.89 |

CURRENCY

| CURERNCY | RBI RATE |
|------------|----------|
| RUPEE - \$ | 64.0214 |
| EURO | 71.1598 |
| YEN 100 | 56.9900 |
| GBP | 82.7669 |

MARKET PULSE

GLOBAL INDICES

| NAME | CMP | NET CH. | % |
|-----------|-------|---------|-------|
| DOW | 20606 | -372 | -1.78 |
| NASDAQ | 6011 | -158.83 | -2.64 |
| NIKKEI | 19529 | -285 | -1.46 |
| HANG SENG | 25219 | -73.89 | -0.29 |
| SGX NIFTY | 9477 | -57 | 0.01 |

WORLD COMMODITIES

| FUTURE | CMP | % |
|-------------|--------|-------|
| CRUDE | 48.95 | -0.24 |
| NATURAL GAS | 3.208 | UNCH |
| GOLD | 1260 | +0.16 |
| SILVER | 16.916 | +0.09 |
| COPPER | 2.522 | -0.86 |

WORLD EVENTS

- **US : Unemployment Claims**
- **UK : Retail Sales m/m**

RESULTS TODAY

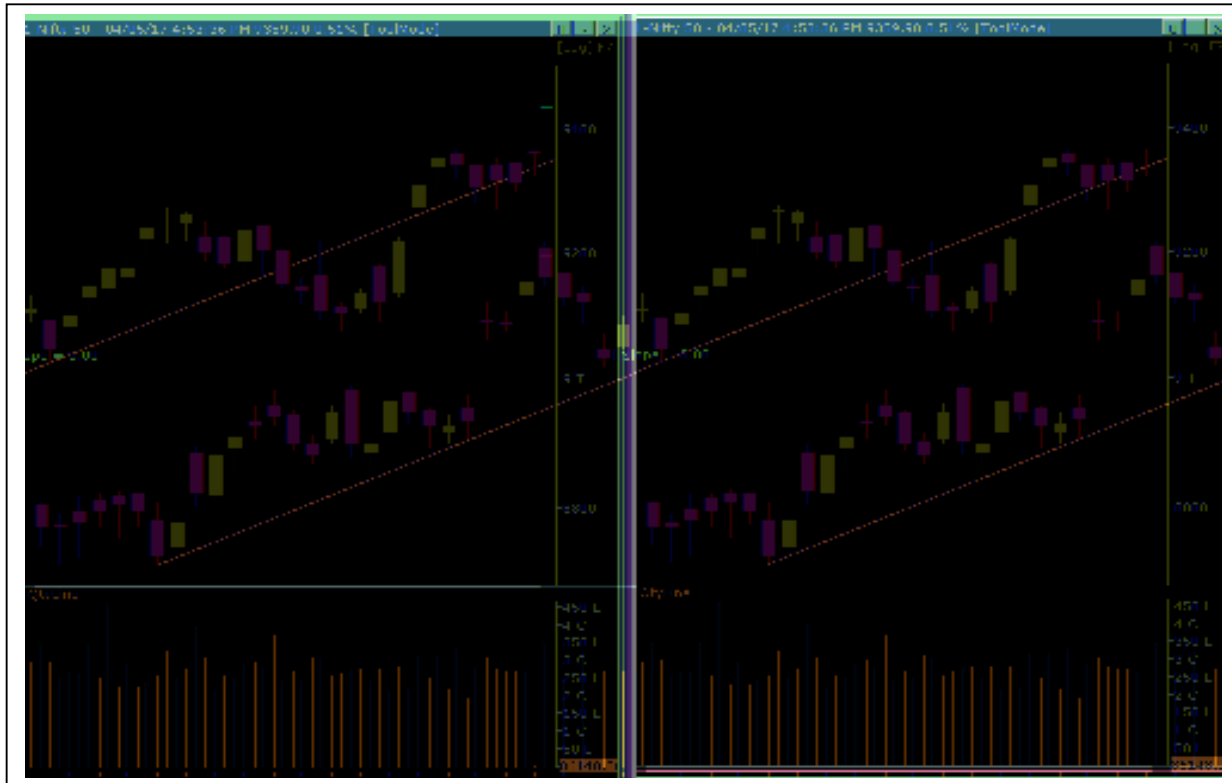
21STCENMGM, ABIRLANUVO, ACEMAN, ALKADIA, ARSHIYA, ASHKOKALC, BAJAJAUTO, BAJAJHLDNG, BANKBARODA, BRPL, COFFEEDAY, DBCORP, GIPCL, GINTEX, IDBI, HSIL, MUTHOOFIN, TATACOFFEE, UNITED BNK

TOP STORY

- Adani SEZ-Intimation of Incorporation of a Wholly Owned Subsidiary Co
- PVR realty firm Elan to invest Rs 550 crore and tie up with PVR
- Dabur signs pact to buy 2 South African cos for a consideration of approximately Rs 24.4 Cr
- Jindal Poly board meeting May 25 to consider QIP for raising funds
- Reliance Infrastructure's subsidiary files Section 9 petition in the Delhi High Court for urgent payment of Arbitration Awa
- Time Techno launches full range of structured wall plastic piping system
- Jumbo Bag commences commercial production at new manufacturing unit
- Hind Copper board approves issue of fresh equity via FPO, IIP, QIP Fresh equity issue approval for up to 10% of existing capital (9.25 crore Shares)



NIFTY CHART



MARKET COMMENTARY

The market witnessed a surge in the last couple of hours of trade, which was until then largely consolidating with range-bound movement. Strong institutional buying on dips could have boosted the market. The indices managed to comfortably hold fresh milestones of 30,500 and 9,500.

The 30-share Sensex closed up 76.17 points at 30658.77, while the Nifty ended up 13.50 points at 9525.75. The market breadth, however, was negative as 1,257 shares advanced against a decline of 1,538 shares. 179 shares stayed unchanged.

For today's trade Nifty likely to trade in the range of 9389-9584

MARKET LEVELS

| | CMP | SUPPORT LEVELS | | | | RESISTANCE LEVELS | | | |
|--------|-------|----------------|-------|-------|-------|-------------------|-------|-------|-------|
| NIFTY | 9525 | 9498 | 9491 | 9470 | 9389 | 9548 | 9553 | 9561 | 9582 |
| USDINR | 64.34 | 64.25 | 64.15 | 64.10 | 64.05 | 64.45 | 64.60 | 64.75 | 64.85 |



BULK DEALS (BSE)

| SCRIP | CLIENT NAME | BUY/SELL | QUANTITY | PRICE |
|------------|----------------------------------------------------------|----------|------------|--------|
| CAPF | CLOVERDELL INVESTMENT LIMITED | S | 24,300,000 | 727.35 |
| CAPF | GOVERNMENT OF SINGAPORE INVT CORPN PTE LTD A/C C ACCOUNT | B | 8,701,476 | 725 |
| LOKESHMACH | VIJAYA LAKSHMI BOLLINENI | S | 119,638 | 101.71 |
| TATAMTRDVR | RAKESH RADHEYSHYAM JHUNJHUNWALA | S | 5,000,000 | 266.5 |
| | | | | |

BULK DEALS (NSE)

| SCRIP | CLIENT NAME | BUY/SELL | QUANTITY | PRICE |
|------------|-------------------------------------------------------------|----------|----------|-------|
| BHARATWIRE | INDIA MAX INVESTMENT FUND LTD | SELL | 228191 | 102.5 |
| HDIL | CREDIT SUISSE (SINGAPORE) LIMITED A/C CREDIT SUISSE (SINGAP | SELL | 2511482 | 96.4 |
| SPYL | GAJANAND INFRACON PRIVATELIMITED | SELL | 4374287 | 0.35 |
| TATAMTRDVR | RAKESH JUNJUNWALLA | SELL | 5000000 | 266.5 |
| | | | | |

SCRIP'S IN F&O BAN

(To resume for normal trading below 80% of market wide limit required)

CANBK, CEATLTD, HDIL, ICIL, IFCI, JINDALSTEEL, JISLIALEQS, JSWENERGY, ORIENTBANK, SYNDIBANK, UJJIVAN

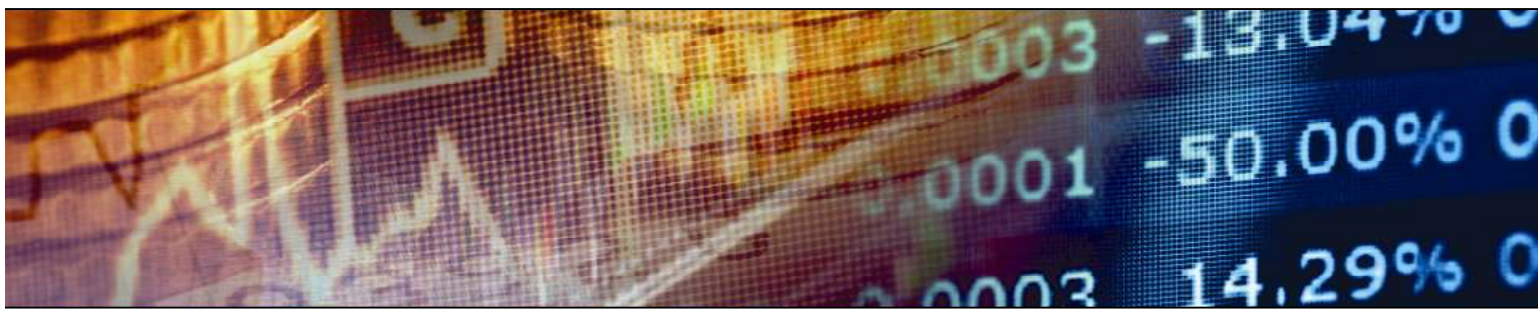
Initial Public Offering (IPO)

| Company Name | Security type | Issue Start Date | Issue End Date | Status |
|--------------|---------------|------------------|----------------|-----------------------|
| PSP Projects | Equity | 17 May 2017 | 19 May 2017 | Avoid |



NIFTY 50 STOCKS: SUPPORT & RESISTANCE

| Symbol | Close | Support 1 | Support 2 | Pivot Point | Resistance1 | Resistance2 |
|------------|-------|-----------|-----------|-------------|-------------|-------------|
| ACC | 1694 | 1680 | 1665 | 1705 | 1719 | 1744 |
| ADANIPTS | 349 | 346 | 343 | 350 | 353 | 358 |
| AMBUJACEM | 258 | 257 | 255 | 258 | 260 | 262 |
| ASIANPAINT | 1155 | 1141 | 1128 | 1150 | 1164 | 1173 |
| AUROPHARMA | 607 | 600 | 593 | 612 | 619 | 631 |
| AXISBANK | 503 | 499 | 494 | 503 | 507 | 511 |
| BAJAJ-AUTO | 3040 | 3011 | 2983 | 3029 | 3058 | 3076 |
| BANKBARODA | 192 | 190 | 188 | 192 | 194 | 196 |
| BHARTIARTL | 376 | 371 | 366 | 376 | 381 | 386 |
| BHEL | 171 | 169 | 168 | 171 | 172 | 174 |
| BOSCHLTD | 24191 | 24012 | 23833 | 24284 | 24463 | 24734 |
| BPCL | 727 | 723 | 718 | 728 | 733 | 739 |
| CIPLA | 562 | 560 | 557 | 563 | 566 | 569 |
| COALINDIA | 276 | 275 | 273 | 276 | 278 | 279 |
| DRREDDY | 2737 | 2696 | 2654 | 2728 | 2769 | 2801 |
| EICHERMOT | 29094 | 28943 | 28793 | 29122 | 29272 | 29450 |
| GAIL | 408 | 405 | 402 | 409 | 412 | 416 |
| GRASIM | 1171 | 1157 | 1143 | 1166 | 1180 | 1190 |
| HCLTECH | 854 | 845 | 837 | 850 | 859 | 863 |
| HDFC | 1553 | 1545 | 1537 | 1558 | 1566 | 1579 |
| HDFCBANK | 1557 | 1551 | 1544 | 1558 | 1565 | 1572 |
| HEROMOTOCO | 3646 | 3599 | 3553 | 3642 | 3688 | 3731 |
| HINDALCO | 199 | 197 | 194 | 198 | 201 | 203 |
| HINDUNILVR | 1009 | 996 | 983 | 1004 | 1017 | 1025 |
| ICICIBANK | 310 | 306 | 302 | 308 | 312 | 314 |
| IDEA | 87 | 86 | 85 | 87 | 88 | 89 |
| INDUSINDBK | 1425 | 1414 | 1403 | 1431 | 1443 | 1460 |
| INFRATEL | 390 | 378 | 366 | 387 | 399 | 409 |
| INFY | 953 | 945 | 937 | 952 | 960 | 966 |
| ITC | 282 | 279 | 277 | 282 | 284 | 287 |
| KOTAKBANK | 951 | 944 | 936 | 953 | 961 | 970 |
| LT | 1755 | 1736 | 1716 | 1750 | 1769 | 1783 |
| LUPIN | 1299 | 1289 | 1278 | 1297 | 1308 | 1317 |
| M&M | 1379 | 1365 | 1351 | 1375 | 1389 | 1398 |
| MARUTI | 6958 | 6903 | 6848 | 6941 | 6996 | 7034 |
| NTPC | 159 | 158 | 156 | 160 | 161 | 163 |
| ONGC | 185 | 183 | 182 | 185 | 186 | 188 |
| POWERGRID | 209 | 207 | 205 | 208 | 210 | 212 |
| RELIANCE | 1353 | 1345 | 1337 | 1356 | 1363 | 1374 |
| SBIN | 308 | 306 | 304 | 307 | 309 | 311 |
| SUNPHARMA | 651 | 646 | 640 | 649 | 655 | 658 |
| TATAMOTORS | 449 | 439 | 428 | 446 | 456 | 463 |
| TATAMTRDVR | 271 | 266 | 262 | 270 | 274 | 278 |
| TATAPOWER | 85 | 84 | 83 | 85 | 86 | 87 |
| TATASTEEL | 494 | 473 | 453 | 486 | 507 | 519 |
| TCS | 2455 | 2432 | 2409 | 2446 | 2470 | 2484 |
| TECHM | 431 | 425 | 420 | 434 | 440 | 449 |
| ULTRACEMCO | 4471 | 4454 | 4438 | 4472 | 4489 | 4506 |
| WIPRO | 511 | 507 | 503 | 512 | 516 | 522 |
| YESBANK | 1455 | 1442 | 1430 | 1463 | 1475 | 1496 |
| ZEEL | 524 | 518 | 512 | 522 | 528 | 532 |



NEWS & RUMOURS:

- **Gold (Spot Dollar) major support = \$1231/\$1197& Resistance = \$1290/\$1319.**
- **Crude oil range->\$44 to \$54.**
- **U.S. Stocks Slump, Bonds Rally Amid Trump Turmoil: Markets Wrap:** - The [turmoil](#) engulfing President Donald Trump's administration spilled into financial markets as U.S. stocks fell the most since March, measures of volatility spiked higher and Treasuries rallied with gold.
- **Dollar continues to drop vs. rivals amid U.S. political woes:** - The dollar continued to drop against other major currencies on Wednesday, as concerns over recent political developments in the U.S. still weighed heavily on the greenback.
- **U.S. inventories of oil, gasoline fall in latest week: EIA:** - [U.S. crude](#) stocks fell last week as refineries hiked output, while gasoline stocks decreased and distillate inventories fell, the Energy Information Administration said on Wednesday. Crude inventories fell by 1.8 million barrels for the week to May 12, compared with analysts' expectations for an decrease of 2.4 million barrels. Crude stocks at the Cushing, Oklahoma, delivery hub rose by 35,000 barrels, EIA said.
- **Gold nears key bullish turning point:** - [Gold](#) looks poised to reach a bullish turning point after its rally in the past 24 hours as U.S. political risk rises, analysts say.
- **U.S. natural gas extends losses after tallying worst day since January:** - U.S. natural gas futures edged lower on Wednesday, extending their biggest one-day loss since late January amid bearish weather forecasts.

TRENDS & OUTLOOK – DATE: 18-May- 2017

PRECIOUS METALS:

| COMMDITY (MCX) | S2 | S1 | PIVOT POINT | R1 | R2 |
|----------------|-------|-------|-------------|-------|-------|
| GOLD (June) | 27900 | 28130 | 28430 | 28777 | 28966 |
| SILVER (July) | 36500 | 37900 | 39105 | 40300 | 41490 |

BASE METALS

| COMMDITY (MCX) | S2 | S1 | PIVOT POINT | R1 | R2 |
|----------------|--------|--------|-------------|--------|--------|
| COPPER (June) | 352 | 356 | 362 | 367 | 373 |
| ZINC (May) | 157.25 | 160.50 | 164.10 | 168.45 | 171.55 |
| LEAD (May) | 127.60 | 131.20 | 134.75 | 139.30 | 143.55 |
| NICKEL (May) | 559 | 574 | 591 | 619 | 636 |

ENERGY

| COMMDITY (MCX) | S2 | S1 | PIVOT POINT | R1 | R2 |
|-------------------|------|------|-------------|------|------|
| CRUDE OIL (May) | 2901 | 3030 | 3155 | 3265 | 3375 |
| NATURAL GAS (May) | 192 | 197 | 205 | 219 | 223 |

DATA TALKS : TODAY'S ECONOMIC DATA :

Prelim GDP q/q of JPY, Unemployment Claims, Philly Fed Manufacturing Index, CB Leading Index m/m, Natural Gas Storage, ECB President Draghi Speaks.



LET THE
**WOMAN
POWER RISE**

**WOMEN
DESK**

All the Ladies in the house are
cordially invited to come
& explore their trading talents.

TOLL FREE: 18001030059

**Registered Office**

Indira House, 3rd Floor, 5 Topiwala Lane,
Opp. Lemington Road Police Station, Grant Road (East), Mumbai - 400007.

Corporate Office

'Ramavat House' E-15, Saket Nagar, Indore - 452018 (M.P.)

Customer Care

Tel: +91-731-4097170/ 71/ 72/ 73/ 74 M. +91 93031 72345

Email: customercare@indiratrade.com www.indiratrade.com

**INSTITUTIONAL DEALING UNIT**

Africa House, 5, Topiwalla Lane, Lamington Road, Mumbai, 400007

Tel: +91 22 30080678 Fax : +91 22 23870767 Email : ie@indiratrade.com

Disclaimer

This report is for private circulation within the Indira Group. This report is strictly confidential and for information of the selected recipient only and may not be altered in any way, transmitted to, copied or distributed, in part or in whole, to any other person or to the media or reproduced in any form. This report should not be construed as an offer or solicitation to buy or sell any securities or any interest in securities. It does not constitute a personal recommendation or take into account the particular investment objectives, financial situations, or any such factor. The information, opinions estimates and forecasts contained here have been obtained from, or are based upon, sources we believe to be reliable, but no representation of warranty, express or implied, is made by us to their accuracy or completeness. Opinions expressed are our current opinions as of the date appearing on this material only and are subject to change without notice.